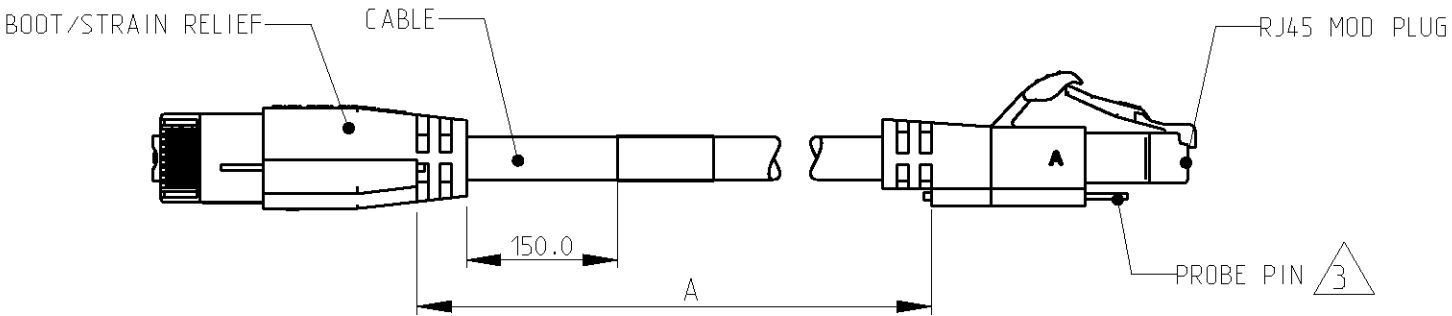


LOC	DIST	REVISIONS					
		P	LTR	DESCRIPTION	DATE	DWN	APVD
1K	2		A	NEW RELEASED	19JUL2005	MP	JS
			A1	Removed Preliminary note. Added note 5	24NOV2005	LD	JS
			A2	UPDATED	07-Feb-07	JG	JS
			A3	ADDED DASH -11 CHANGED DRW LOGO	18-Nov-08	JG	JS

1. RJ45 CATEGORY 6 AMPTRAC PATCH CABLE ASSEMBLIES ARE USED AS PATCH LEADS IN GENERIC CUSTOMER PREMISES CABLING ACCORDING TO ISO/IEC 11801. THEY CAN ALSO BE USED AS WORKSTATION/EQUIPMENT LEADS TO MAINTAIN CHANNEL PERFORMANCE. AND HAVE AN INTEGRATED 9TH WIRE THAT IS USED TO MAKE CONNECTION BETWEEN SENSOR CONTACTS TO MONITOR OPEN AND CLOSED CIRCUITS
2. EACH ASSEMBLY IS SUPPLIED IN A CLEAR BAG.
3. DIMENSIONS ARE NOMINAL UNLESS OTHERWISE SPECIFIED.



10.0	10000	1-1711351-1
5.0	5000	1711351-8
3.0	3000	1711351-7
2.0	2000	1711351-6
1.0	1000	1711351-5
2.5	2500	1711351-2
1.5	1500	1711351-1
METERS REF	DIM "A" mm	TE P/N

THIS DRAWING IS A CONTROLLED DOCUMENT FOR TYCO ELECTRONICS CORPORATION  
IT IS SUBJECT TO CHANGE AND THE CONTROLLING ENGINEERING ORGANIZATION  
SHOULD BE CONTACTED FOR THE LATEST REVISION.

DIMENSIONS:  
mm

MATERIAL

-

FINISH

-

DWN  
M.PANADERO  
19JUL2005

CHK  
L.de.DIOS  
19JUL2005

APVD  
J.SANABRA  
19JUL2005

PRODUCT SPEC  
108-93017

APPLICATION SPEC  
-

WEIGHT  
-

CUSTOMER DRAWING

SCALE  
1:1

Tyco Electronics

Tyco Electronics AMP España, S.A.  
Barcelona, Spain

NAME  
RJ45 PATCH CABLE ASSY AMPTRAC  
CAT6, UTP, LSZH, STRANDED, WHITE

SIZE  
A3

CAGE CODE  
00779

DRAWING NO  
C=1711351

RESTRICTED TO  
-

SHEET  
1 OF 1

REV  
A3

AMP 1470-19 REV 31MAR2000

Pro/ENGINEER DRAWING