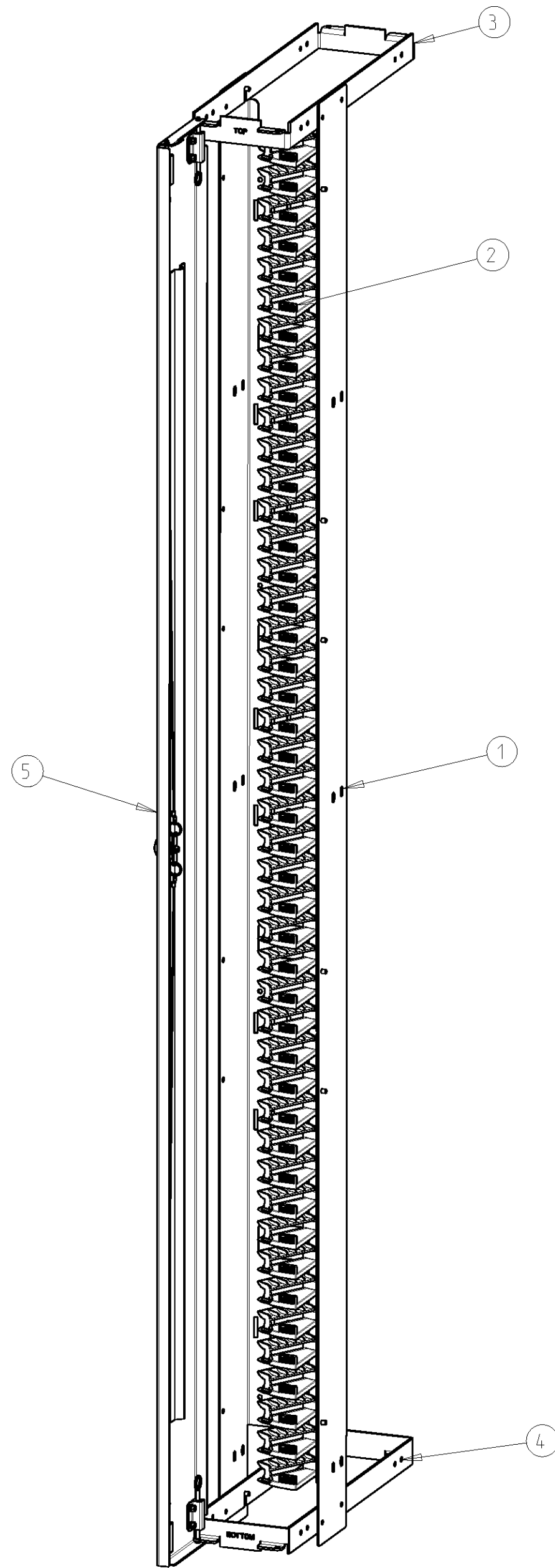
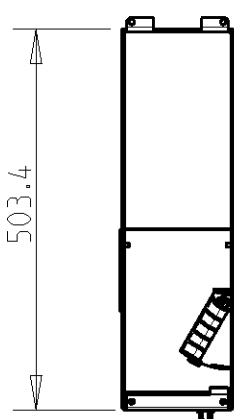
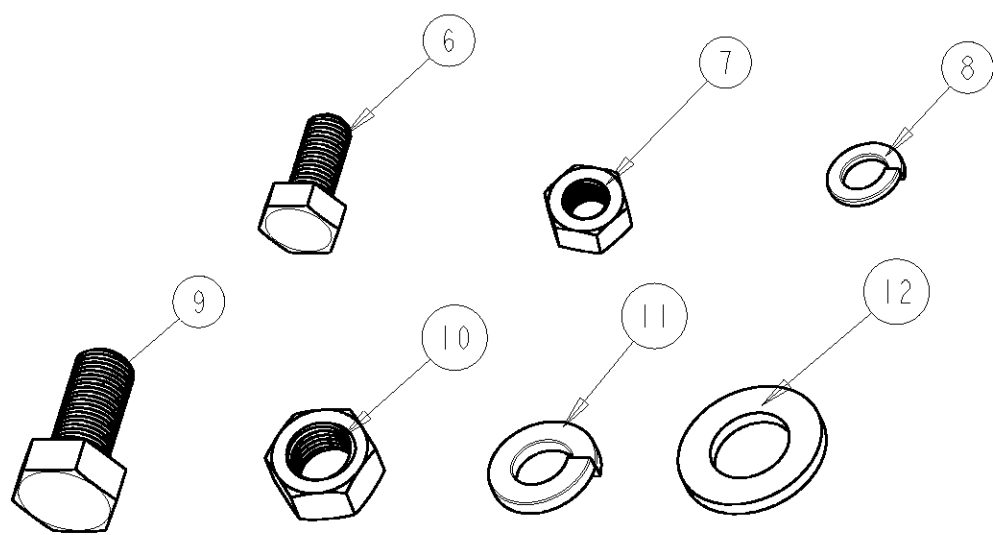


SCALE 0.100



SCALE 0.150

MOUNTING HARDWARE INCLUDED



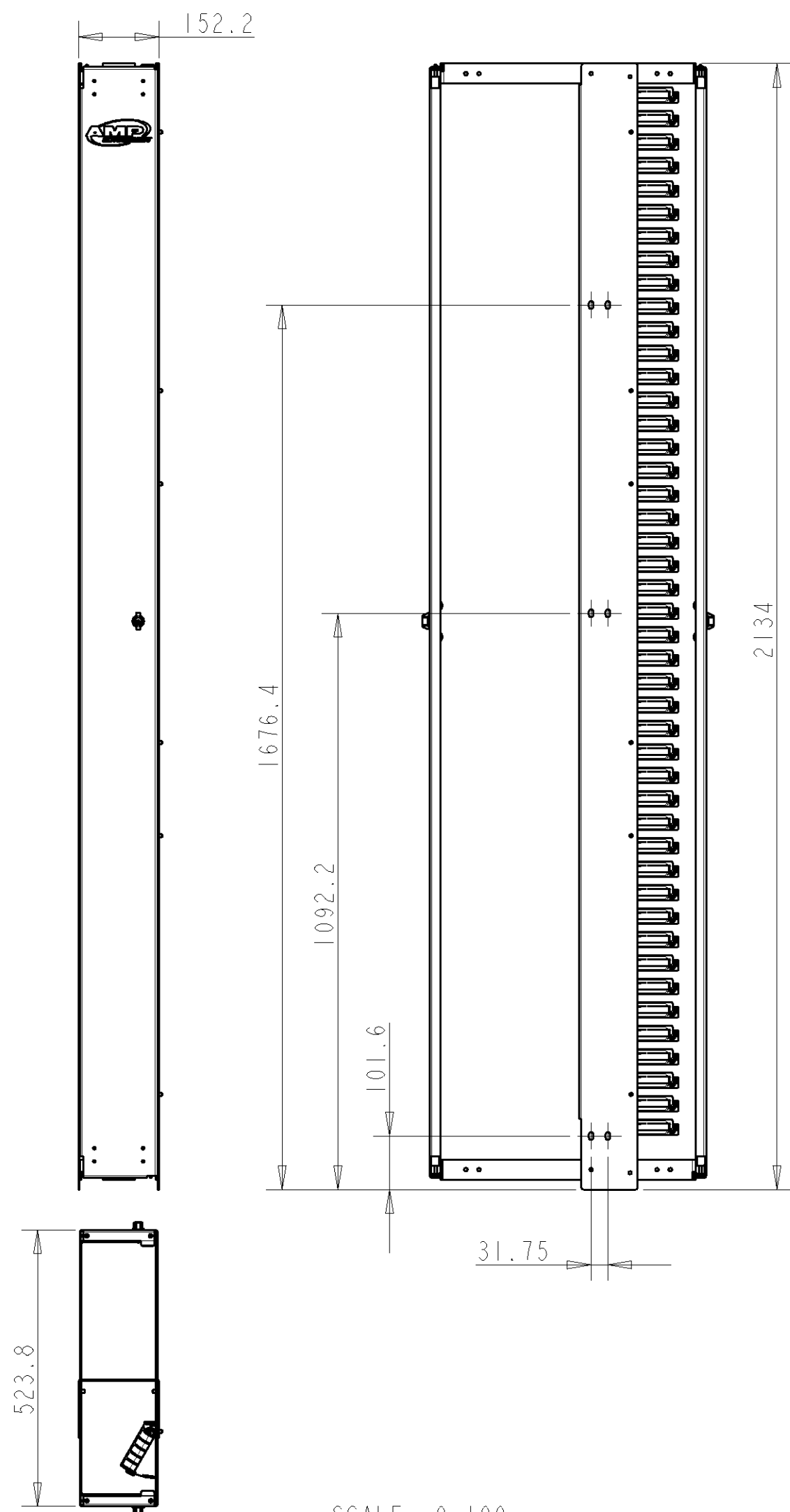
PACKAGING INFORMATION
PACKAGING BY VENDOR (PACKED UNASSEMBLED)

	6	Washer Din 125-1A M10	12
	6	Spring Lock washer Din 127B M8	11
	6	Hexagon nut Din 934 M8	10
	6	Screw Din 933 M8x18	9
	14	Spring Lock washer Din 127B M6	8
	14	Hexagon nut Din 934 M6	7
	4	Screw Din 933 M6x14	6
	1	Hi-D 6" Door Assy LEFT	5
	1	Hi-D Door Support 6" Cable Duct BOTTOM	4
	1	Hi-D Door Support 6" Cable Duct TOP	3
	3	Hi-D Cable Mgmt Left 15U	2
	1	Hi-D 6" Duct	1
	QTY	DESCRIPTION	ITEM

CUSTOMER DRAWING

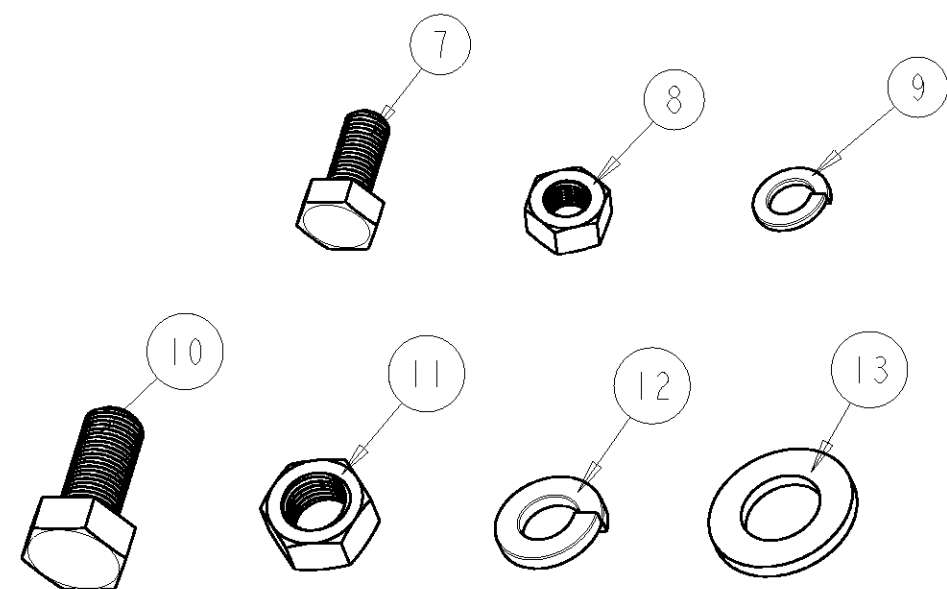
AMP part N° : 1671107

DRAWING STATUS		REVISION DESCRIPTION: - ALL PART NUMBER SAME REVISION. OTHER DRW AND SHEET NUMBER	
RELEASED		-	
DRAWING BY		DRAWING REVISION BY	
NAME: H. BLEUS		NAME: -	
DATE: 16-SEP-09		DATE: -	
SCALE: 1000		DRAWING FORMAT: A2	
ISO-SYMBOL		GENERAL TOLERANCE	
DRAWING TITLE		DRAWING SHEET REVISION NUMBER	
Hi-D 6" DUCT LEFT (FRONT DOOR ONLY)		D_0014001_01_AF	
TYCO/Electronics - Raychem N.V. DIESTSESTEENWEG 692 B-3010 KESSEL-LO, BELGIUM		REVISION AF	
THIS DRAWING AND INFORMATION SET FORTH HEREON ARE THE PROPERTY OF TYCO/Electronics/Raychem N.V. AND ARE TO BE HELD IN TRUST AND CONFIDENCE. PUBLICATION, DUPLICATION, DISCLOSURE OR USE FOR ANY PURPOSE NOT EXPRESSLY AUTHORIZED IN WRITING BY TYCO/Electronics IS PROHIBITED.			

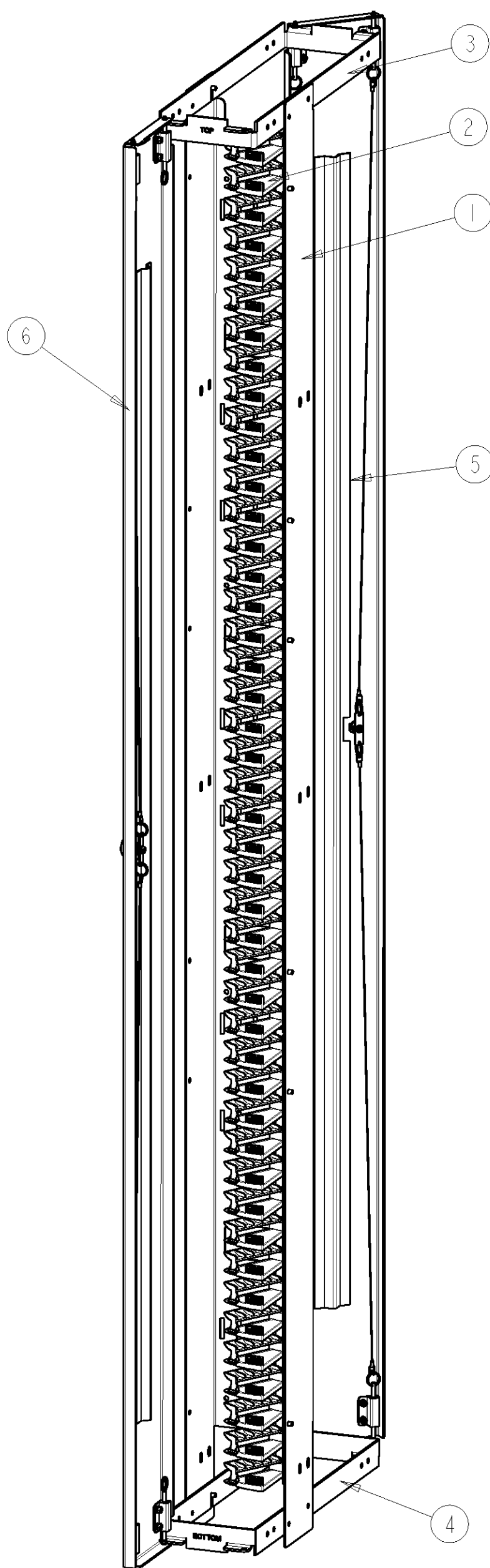


SCALE 0.100

MOUNTING HARDWARE INCLUDED



SCALE 1.000



SCALE 0.150

PACKAGING INFORMATION:
PACKAGING BY VENDOR (PACKED UNASSEMBLED)

6	Washer Din 125-1A M10	13
6	Spring lock washer Din 127B M8	12
6	Hexagon nut Din 934 M8	11
6	Screw Din 933 M8x18	10
14	Spring lock washer Din 127B M6	9
14	Hexagon nut Din 934 M6	8
4	Screw Din 933 M6x14	7
1	Hi-D 6" Door Assy LEFT	6
1	Hi-D 6" Door Assy RIGHT	5
1	Hi-D Door Support 6" Cable Duct BOTTOM	4
1	Hi-D Door Support 6" Cable Duct TOP	3
3	Hi-D Cable Mgmt Left 15U	2
1	Hi-D 6" Duct	1
1--1	DESCRIPTION	ITEM
QTY		

CUSTOMER DRAWING

AMP part N° : 1671107

DRAWING STATUS	REVISION DESCRIPTION: - BOM ADDED / TOP-BOTTOM BRCKT DOOR SUPPORT LABEL REMOVED - ALL PART NUMBERS SAME REVISION, OTHER SHEET NUMBER		
RELEASED	DRAWING BY NAME: H. BLEUS DATE: 12-SEP-08	DRAWING REVISION BY NAME: - DATE: -	VOLUME OF MOULDED PART OR AREA OF UNFOLDED SHEETMETAL PART. mm ³ / mm ² -

SCALE: 1000	DRAWING FORMAT A2	DRAWING TITLE	
ISO-SYMBOL	GENERAL TOLERANCE	Hi-D 6" DUCT LEFT	

Tyco Electronics		DRAWING_SHEET_REVISION NUMBER D_0014001_02_AF	REVISION AF
<small>TYCO/Electronics - Raychem N.V. DIESTSESTEENWEG 692 B-3010 KESSEL-LO, BELGIUM</small>		<small>THIS DRAWING AND INFORMATION SET FORTH HEREON ARE THE PROPERTY OF TYCO/Electronics/Raychem N.V. AND ARE TO BE HELD IN TRUST AND CONFIDENCE. PUBLICATION, DUPLICATION, DISCLOSURE OR USE FOR ANY PURPOSE NOT EXPRESSLY AUTHORIZED IN WRITING BY TYCO/Electronics IS PROHIBITED.</small>	