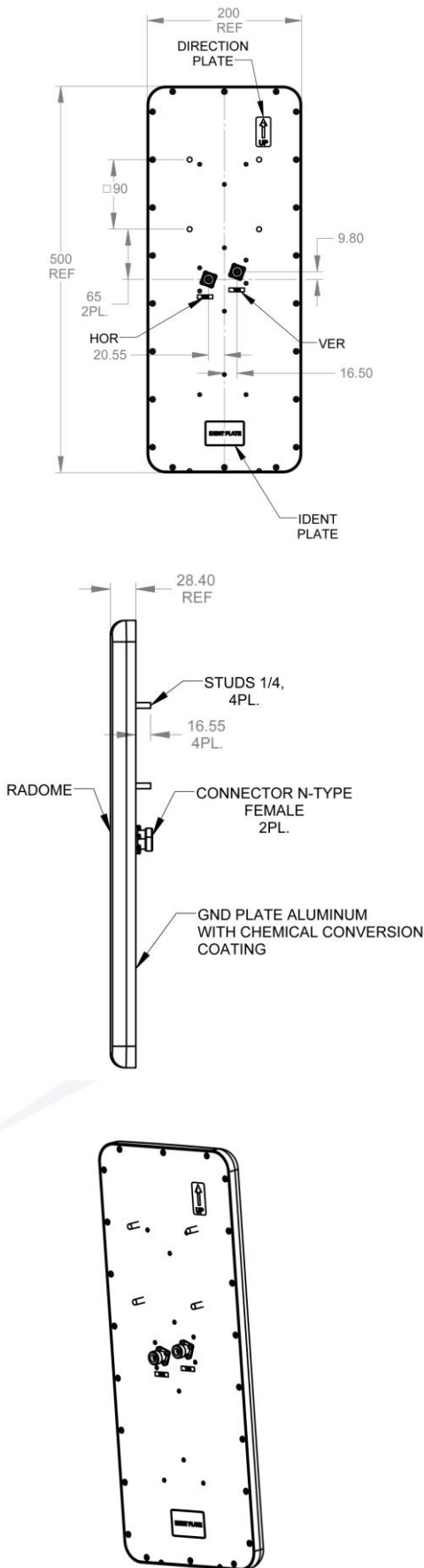


4.9 – 6 GHz, Dual Polarity, Vertical and Horizontal, 16.5 dBi Sector Antenna - 60 degrees



Technical Specifications

REGULATORY COMPLIANCE	RoHS , CE 0682
ELECTRICAL	
FREQUENCY RANGE	4.9 – 6.0 GHz
GAIN	14.5 dBi (min) @ 4.9 - 4.95 GHz 15.0 dBi (min) @ 4.95 - 5.15 GHz 15.5 dBi (min) @ 5.15 – 5.47 GHz 16.5 dBi (min) @ 5.47 – 6.0 GHz
VSWR	2 :1 (max) 1.7 : 1 (typ)
3DB AZIMUTH BEAM WIDTH	60° (typ)
3DB ELEVATION BEAM WIDTH	8° (typ)
POLARIZATION	Dual Linear Vertical + Horizontal
CROSS POLARIZATION	-15 dB (typ)
F/B RATIO	20dB (max)
EL SIDE LOBES LEVEL	-12dB (typ)
PORT TO PORT ISOLATION	22 dB (min) 25 dB (typ)
INPUT IMPEDANCE	50 Ω
INPUT POWER	20W (max)
LIGHTNING PROTECTION	DC Grounded
MECHANICAL	
DIMENSIONS (L X W X D)	500 x 200 x 30 mm (max)
WEIGHT	1.5 kg (max)
CONNECTOR	2 x N-type female
BASE PLATE	Aluminum with chemical conversion coating
RADOME	Plastic
RADOME THICKNESS	2.0 ± 0.2 mm
OUTLINE DRAWING	RD42850600C
MOUNTING KIT	MT-120025
ENVIRONMENTAL	
LOW TEMPERATURE	-55°C
HIGH TEMPERATURE	+71°C
TEMP. CYCLING	-45°C +70°C
VIBRATION	Random 4M5
SHOCK MECHANICAL	4M5
HUMIDITY	95%
WATER TIGHTNESS	IP67
FLAMMABILITY	Class HB
ICE AND SNOW	25mm Radial
WIND SPEED SURVIVAL OPERATION	220 Km/h, 160 Km/h