

# PANZONE® Raised Floor Enclosures

## specifications

The enclosure shall require the removal of only one floor tile and drop through a single tile opening without disassembly to install. The mounting brackets shall be of a one-piece design without any loose hardware for easy attachment to raised floor pedestals. The enclosure shall be properly grounded and bonded to the raised floor system when installed without the need of additional jumpers or other components. The enclosure shall be available in multiple sizes and be configurable for both field-terminated and pre-terminated connectivity. The enclosure and cable openings shall have the capacity to support 48 Category 6/5e cables per rack space. Enclosure shall have flexible cable ingress/egress grommets that allow for quick and easy moves, adds, and changes, while still maintaining a plenum rating. The enclosure shall be capable of being secured and protected from unauthorized access with an optional lockable cover.



## technical information

<b>Dimensions:</b>	PZRFE4: 22.62"H x 22.62"W x 5.00"D (574.7mm x 574.7mm x 127.0mm) PZRFE8: 22.62"H x 22.62"W x 8.50"D (574.7mm x 574.7mm x 215.9mm) PZRFE12: 22.62"H x 22.62"W x 12.00"D (574.7mm x 574.7mm x 304.8mm) PZRFC: 22.88"H x 22.88"W x 1.09"D (581.1mm x 581.1mm x 27.6mm)
<b>Minimum depth of raised floor:</b>	PZRFE4: 6.0" (152.4mm); with cover: 8.0" (203.2mm) PZRFE8: 9.5" (241.3mm); with cover: 11.5" (292.1mm) PZRFE12: 13.0" (330.2mm); with cover: 15.0" (381.0mm)
<b>Cable capacity:</b>	PZRFE4 – Category 6/5e: 192; Category 6a: 160 PZRFE8 – Category 6/5e: 384; Category 6a: 384 PZRFE12 – Category 6/5e: 576; Category 6a: 504
<b>Installation:</b>	Single tile drop-in enclosure and one-piece mounting brackets with captured hardware; does not require removal of stringers
<b>Packaging:</b>	Raised floor enclosures include six <i>COOL BOOT™</i> Raised Floor Air Sealing Grommets, four pedestal one-piece mounting brackets, four bonding bolts and magnetic ruler
<b>Materials:</b>	Made with rugged 14 gauge aluminum

## key features and benefits

<b>In-floor design</b>	Saves valuable real estate in the data center by allowing cable terminations below raised floors, relieves congestion in racks and cabinets
<b>Single tile drop-in design</b>	Reduces installation time by as much as 50% compared to similar solutions on the market
<b>One piece mounting with captured hardware</b>	Reduces the number of components and time needed to install
<b>Integrates COOL BOOT™ Raised Floor Air Sealing Grommets</b>	Allows for quicker and easier moves, adds, and changes while maintaining a plenum rating to help conserve energy
<b>Integral grounding and bonding design</b>	Enclosure installation creates a mechanical electrical bond to raised floor pedestals without the need for extra components; protects network equipment and personnel
<b>Multiple sizes</b>	Allows greater network design flexibility
<b>High capacity cable ingress and egress</b>	Manages and organizes up to 576 Category 6/5e, 508 Category 6A, or 1152 fiber optic cables, which is twice the capacity of similar products on the market
<b>Configurable mounting brackets</b>	Accommodates field-terminated or pre-terminated connectivity for greater network design flexibility
<b>Adjustable TIA/EIA 19" mounting brackets</b>	Allows mounting brackets to be rotated and/or adjusted for greater network design flexibility and improve access to patch panels
<b>Optional lockable cover</b>	Protects against unauthorized access for increased security protection and network reliability

## applications

A PANDUIT® PANZONE® Raised Floor Enclosure is an ideal data center solution as a consolidation point or Zone Distribution Area (ZDA). The raised floor enclosure saves valuable real estate by providing space below the raised floor to mount TIA 19" flat rack mountable patch panels, which relieves congestion in racks and cabinets for installing network equipment. For mainframes or storage area network applications, a ZDA can also save valuable

floor space by locating a termination point in a raised floor enclosure rather than in an adjacent cabinet. The raised floor enclosure is capable of accommodating field terminated or pre-terminated copper or fiber cassettes as a ZDA for rapid data center deployments and reconfigurations. The enclosure also provides an efficient and cost effective method to design and deploy structured cabling systems for open office architecture in any raised floor application.

### Raised Floor Enclosures

<b>4 RU:</b>	PZRFE4
<b>8 RU:</b>	PZRFE8
<b>12 RU:</b>	PZRFE12

### Raised Floor Enclosure Cover

<b>Lockable cover:</b>	PZRFC
------------------------	-------

### MINI-COM® ULTIMATE ID® Modular Patch Panels

<b>24-port:</b>	UICMPP24BLY
<b>48-port:</b>	UICMPP48BLY

### MINI-COM® Flush Mount Modular Patch Panels

<b>24-port:</b>	CPP24FMWBLY
<b>48-port:</b>	CPP48FMWBLY

### MINI-COM® High Density Modular Patch Panels

<b>48-port:</b>	CPP48HDWBLY
<b>72-port:</b>	CPP72FMWBLY

### OPTICOM® QUICKNET™ Pre-Terminated MTP Cassettes

<b>10GiG™ LC 24-port:</b>	FCX-24-10Y
<b>10GiG™ SC 12-port:</b>	FCX-12-3SY

<b>50/125 LC 24-port:</b>	FC5-24-10Y
<b>50/125 SC 12-port:</b>	FC5-12-3SY

<b>62.5/125 LC 24-port:</b>	FC6-24-10Y
<b>52.5/125 SC 12-port:</b>	FC6-12-3SY

### OPTICOM® Fiber Adapter Patch (FAP) Panels Accepts QUICKNET™ Pre-Terminated MTP\* Cassettes

<b>Accepts 4 FAPs/cassettes:</b>	CFAPPBL1
<b>Accepts 8 FAPs/cassettes:</b>	CFAPPBL2

\*MTP is a registered trademark of US Conec Ltd.

# PANZONE® Raised Floor Enclosures



PZRFE4



PZRFE8



PZRFE12

## PANZONE® Raised Floor Cover

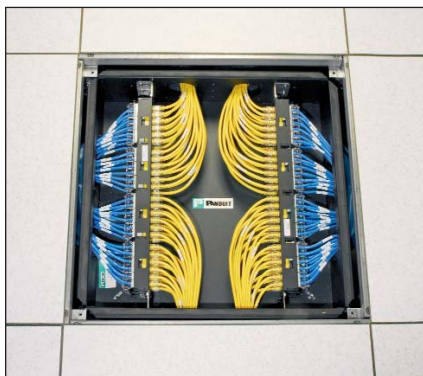


PZRFC



PZRFE8 enclosure  
shown with PZRFC cover

## PANZONE® Raised Floor Enclosure Application



PZRFE4 with Copper Connectivity



PZRFE8 with QUICKNET™ Copper and  
Fiber Connectivity

### WORLDWIDE SUBSIDIARIES AND SALES OFFICES

PANDUIT CANADA  
Markham, Ontario  
cs-cdn@panduit.com  
Phone: 800.777.3300

PANDUIT EUROPE LTD.  
London, UK  
cs-emea@panduit.com  
Phone: 44.20.8601.7200

PANDUIT SINGAPORE PTE. LTD.  
Republic of Singapore  
cs-ap@panduit.com  
Phone: 65.6305.7575

PANDUIT JAPAN  
Tokyo, Japan  
cs-japan@panduit.com  
Phone: 81.3.6863.6000

PANDUIT LATIN AMERICA  
Jalisco, Mexico  
cs-la@panduit.com  
Phone: 52.333.777.6000

PANDUIT AUSTRALIA PTY. LTD.  
Victoria, Australia  
cs-aus@panduit.com  
Phone: 61.3.9794.9020

For a copy of PANDUIT product warranties, log on to [www.panduit.com/warranty](http://www.panduit.com/warranty)



For more information  
Visit us at [www.panduit.com](http://www.panduit.com)  
Contact Customer Service by email: [cs@panduit.com](mailto:cs@panduit.com)  
or by phone: 800-777-3300 and reference ZCSP08

© 2009 PANDUIT Corp.  
ALL RIGHTS RESERVED.  
WW-ZCSP08  
1/2009