

NetTool™ Series II

Inline Network Tester

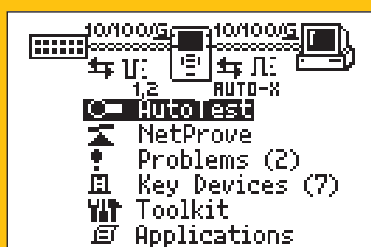
Email not responding? Who's to blame? Where to start? NetTool Series II redefines how to track down and isolate the source of connectivity problems while providing the vision you need to troubleshoot network devices.

The new Series II NetTool features NetProve™ diagnostics – this easy, one-button test proves if the network is to blame for a connectivity problem. In seconds, you can test connectivity to key devices and service ports enterprise-wide.

NetTool's inline vision provides a unique view into 10, 100 and Gigabit links to troubleshoot device problems fast. Verify compatible configurations of switches and PCs. Monitor the conversations between VoIP phones and the network. Monitor ports for suspicious traffic from spyware, malware, and viruses. Discover key devices, problems, VLANs and switch ports. Measure PoE line voltage and current and verify PoE pairs.

And if the problem is cable related, NetTool verifies wiremap, displays the distance to cabling faults, and locates cables others can't with IntelliTone Digital Toning.

All this in a handheld, portable tool built to take what you can dish out.



NetTool Series II features

- **NetProve diagnostics** – isolate device and application connectivity issues in seconds.
- **Inline Gigabit** – troubleshoot Gigabit-to-the-desk deployments with dual 10, 100, and 1000 Mbps Ethernet interfaces.
- **PoE current measurement** – view PoE current, voltage and pair information either inline or single-ended.
- **Monitoring and authentication option** – identify spyware, malware, and viruses with port monitoring; troubleshoot authentication issues with 802.1X log.
- **VoIP Option** – monitor IP phone boot-up and VoIP conversations and measure key call quality metrics.
- **PC to network connectivity** – connect inline between two network devices and see common connectivity problems like speed and duplex mismatch, link problems, and errors.
- **PC's network configuration** – review servers the PC is configured to use, with services offered, name, IP address and subnet.
- **VLAN, CDP, EDP, LLDP visibility** – see native and appliance VLANs and discovery protocol information.
- **Spot available network resources** – see the IP address, MAC address, subnet, and services offered by active servers, routers and printers.
- **Identify protocols on the PC and network** – IP, NetWare, NetBIOS, Apple, and other protocols shown to identify mismatches and unwanted protocols.
- **Distinguish service at a network drop** – determine whether a drop is offering Ethernet, phone, Token Ring, or is inactive.
- **Monitor network health** – see frames sent, utilization, broadcasts, errors, and collisions – for both the desktop and network conversations.
- **Problems Log** – alerts you to excessive errors, duplicate IPs, unanswered DNS queries, unwanted protocols and TCP/IP connection failures.
- **Perform basic cable tests** – check patch cables or installed wiring for length, shorts, split pairs, or opens, including pin-to-pin connection.
- **IntelliTone™ Digital Signalling** – quickly and safely locate cables on active networks, even when terminated at a switch.



Inline vision between the PC or VoIP phone and network to solve application connectivity problems with the touch of a button

NetProbe™ diagnostics

✓ Device Response				
→ Ping (32 bytes)				
Sent	Rcvd	Lost	Loss	
3	3	0	0%	
Min	Max	Avg	Limit	
<1ms	<1ms	<1ms	10ms	
→ App Port DNS(53)				
Sent	Rcvd	Lost	Loss	
3	3	0	0%	

Inline



Inline port monitor

Inline Port Monitor	
64.236.22.63:80,TCP	
ads.cnn.com	
http frames: 20, 8KB	
66.151.244.166:80,TCP	
cnn.122.207.net	
http frames: 8, 5KB	

PoE measurement

Link Config	
PoE Status	
Pairs: -7.8 +4.5	
Volts: 51.52 v	
Current: 58 ma	
Rx Pair: 3,6	
Advertsd Spd: 10/100	
Actual Spd: 100Mb	
Level: N: Normal	

Complete documentation

Reporter Menu	
** Delete All Reports	
1. 7-8-06 1620	
2. BLD4 FL2	
3. <empty>	
4. <empty>	
5. <empty>	
6. <empty>	

Isolate device and application connectivity issues in seconds with NetProbe™

Verify, isolate, and document device and connectivity problems faster than ever before with automated NetProbe diagnostics. A user calls you, blaming the network, when he is unable to send an email message.

Armed with a NetTool Series II, in seconds you can prove whether the network is truly at fault by seeing connectivity to key network devices and services. If the network is at fault, NetProbe will isolate the source of the problem so you can fix it fast. If it is not the network, NetProbe will identify which device or application port is slow to respond so you can dispatch the appropriate resource to correct the problem. This revolutionary new way to resolve connectivity issues is at least four times faster than conventional methods, resulting in improved productivity and happier users.

And NetProbe improves IT staff efficiencies through improved workflow – simply create multiple catalogs representing various segments of your network. Within minutes, you can prove connectivity with up to 100 key enterprise devices and services. Do you manage remote sites? Equip less skilled personnel at remote sites with NetTools, pre-loaded with NetProbe catalogs, to shift some frontline troubleshooting responsibilities to local staff.

NetProbe	
MyKeyHosts	
MyWAN	
SiteA_Device	
SiteB_Device	
SiteC_Device	
SiteD_Device	
WrkGrp_A	

Use Netprobe to build catalogs representing various segments of your network – organize catalogs by devices, applications, workgroups, and/or sites.

Inline functionality reduces troubleshooting time







NetTool Series II is the *only* handheld troubleshooting tool with inline vision into 10, 100 and Gigabit links to see the actual traffic between the network and end devices like PCs, VoIP phones, access points and security cameras. By analyzing network-device conversations, you can view detailed configuration information to troubleshoot compatibility and connectivity issues. Monitor link health and network problems, discover key devices, identify active protocols, and view segment information including VLANs and switch port.



The right tool for the job

Since no two networks are identical, we offer several models to match your individual requirements and to maximize the value of your NetTool investment. From our top-of-the-line NetTool Series II Pro VoIP to the entry-level NetTool 10/100, you will find a NetTool that fits your network troubleshooting needs and your budget.

All NetTool models feature an Autotest to troubleshoot the cabling infrastructure and to test active Ethernet networks. Features common across all models include cable testing, a problem log, protocol discovery, device and service discovery, and visibility into link configuration and health. The table at right highlights the key differences between NetTool models.

Feature	     					
	Series II Kit	Series II Pro VoIP	Series II Pro	10/100 Pro VoIP	10/100 Pro	10/100 Standard
1000 Mbps Ethernet interface	•	•	•			
Inline device and traffic analysis	•	•	•	•	•	Option
NetProbe device and application connectivity diagnostics	•	•	•			
Port monitoring and authentication	•	Option	Option			
VoIP testing, monitoring and troubleshooting	•	•	Option	•	Option	
Inline PoE voltage measurement and pair identification	•	•	•	•	•	Option
IntelliTone digital toning	•	•	•			
Device and network reporting	•	•	•	•	•	
PC interface for data transfer	USB	USB	USB	Serial	Serial	Serial
Internal NiMH battery charging	•	Option	Option			
IntelliTone 200 Probe + Wireview cable IDs #2-6	•	Option	Option			

Ordering information

NetTool models include NetTool tester, interface cable, four AA batteries, wiremap adapter, multi language Getting Started Guide, and resource CD with Users Manual and companion utility software.

Models	Description
NTS2-NSKIT	Series II Network Service Kit with monitoring and authentication option, VoIP option, 10/100/1000 inline, NetProbe, IntelliTone toning, NiMH batteries/charger, IntelliTone 200 Probe, Wireview cable IDs #2-6, deluxe carry case
NTS2-VOIP	Series II Pro VoIP with VoIP option, 10/100/1000 inline, NetProbe, IntelliTone toning
NTS2-PRO	Series II Pro with 10/100/1000 inline, NetProbe, IntelliTone toning
CIQ-VOIP	CableIQ VoIP Enterprise Service Kit includes: CableIQ Advanced IT Kit and NetTool Series II Pro VoIP
NT-VOIP	10/100 Pro VoIP with VoIP option, 10/100 inline
NT-PRO	10/100 Pro with 10/100 inline
NT	10/100 single-ended

Options and Accessories

Models	Description
NTS2-VOIP-OPT	Upgrade from NTS2-PRO to NTS2-VOIP
NTS2-MONAUTH-OPT	Add monitoring and authentication capabilities to NTS2-PRO or NTS2-VOIP
NT-VOIP-OPT	Upgrade from NT-PRO to NT-VOIP
NT-PRO-OPT	Upgrade from NT to NT-PRO
MT-8200-63A	IntelliTone 200 probe for Series II
TPAK	ToolPak hanging kit for Series II
NTS2-POWERPAK	AC adapter and NiMH battery set for Series II
DTX-ACUN	AC universal adapter for Series II
BATT-AA-NIMH (4)	Rechargeable NiMH battery set (4) for all models
NT-AC-ADAP	AC adapter for 10/100
NT-BATT-CHG	NiMH battery charger for 10/100
WIREVIEW 2-6	WireView WireMappers #2-6 for Series II
NT-HOLSTER	Holster for 10/100
GLD-NT	Gold priority support for all models
GLD-NT-REN	Gold priority support renewal for all models

Free Personalization Option with registration

Register your NetTool tester and receive a personalization option free. Load your custom image into your NetTool to uniquely identify your tester. Also receive notification of software upgrades and product enhancements.

NETWORK SUPERVISION

Fluke Networks
P.O. Box 777, Everett, WA USA 98206-0777

Fluke Networks operates in more than 50 countries worldwide. To find your local office contact details, go to www.flukenetworks.com/contact.

©2009 Fluke Corporation. All rights reserved.
Printed in U.S.A. 4/2009 1567676 D-ENG-N Rev K