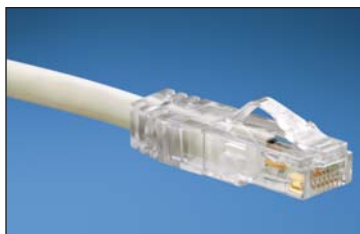


# TX6A™ 10Gig™ UTP Patch Cords with MaTriX Technology

# PANDUIT® SPECIFICATION SHEET

## specifications


Category 6A/Class E<sub>A</sub> UTP patch cords shall be constructed of 23 AWG stranded copper cable with an enhanced performance modular plug on each end. Copper conductors in patch cable shall be twisted in pairs and separated by a quadrant separator. All four pairs shall be surrounded by matrix tape and a flame retardant jacket. The patent pending matrix tape shall suppress alien crosstalk and allow 10 Gb/s transmission. Patch cords shall be used in all work area outlets and patch panels and shall be compatible with both T568A and T568B wiring schemes.



## technical information

<b>Category 6A/Class E<sub>A</sub> channel performance:</b>	Certified channel performance in a 4-connector configuration up to 100 meters and exceeds the requirements of ANSI/TIA/EIA-568-C.2 Category 6A and ISO 11801 Class E <sub>A</sub> standards for supporting 10GBASE-T transmission over twisted-pair cabling systems as part of the Panduit® TX6A™ 10Gig™ UTP Copper Cabling System
<b>Cable diameter:</b>	0.280 in. (7.1mm) nominal
<b>IEC compliance:</b>	Meets IEC 60603-7
<b>PoE compliance:</b>	Meets IEEE 802.3af and draft requirements of IEEE 802.3at for PoE Plus
<b>UL rated:</b>	No. 1863

## key features and benefits

<b>100% performance tested</b>	Confidence that each patch cord delivers specified performance
<b>MaTriX Technology</b> 	Provides superior suppression of both PSANEXT and PSAACR-F; improves the installation flexibility by allowing cable combing in existing pathways without compromising performance
<b>Flexible cable design</b>	Improved cable management in high density applications enabling easier installations
<b>Center de-embedded plug</b>	Performs in center of ANSI/TIA/EIA-568-C.2 component range ensuring interoperability and superior performance
<b>Integral pair manager</b>	Optimizes performance, consistency, and reliability by reducing untwist at plug
<b>Patented tangle-free latch</b>	Prevents snags and provides easy release, saving time and providing reliability on frequent moves, adds, and changes
<b>Slender strain relief boot</b>	Provides easy access in high-density applications
<b>Robust construction</b>	Rated to 2500 mating cycles
<b>Identification</b>	Provides identification of performance level, length, and quality control number for future traceability
<b>Variety of colors and lengths</b>	Meets individual length and color-coding requirements for greater system flexibility
<b>Key version (optional)</b>	Color-specific keys with positive and negative keying features mechanically and visually distinguish connections to prevent unintentional insertion into unlike keyed or non-keyed ports, offering network design flexibility, versatility, and accommodating discrete networks for enhanced security
<b>Color bands (optional)</b>	Snap onto cable, allowing additional color-coding options

## applications

The TX6A™ 10Gig™ UTP Patch Cords with MaTriX Technology are a component of the Panduit® TX6A™ 10Gig™ Copper Cabling System. Interoperable and backward compatible, this end-to-end system provides design flexibility to protect network investments well into the future. Key applications include:

- 10GBASE-T Ethernet
- Data center I/O consolidation
- Data center server virtualization
- Consolidation of network interconnects
- Back-bone aggregation
- Parallel processing and high speed computing

[www.panduit.com](http://www.panduit.com)

### TX6A™ 10Gig™ UTP Copper Cabling System with MaTriX Technology

### TX6A™ 10Gig™ UTP Patch Cords with MaTriX Technology

<b>Foot lengths:</b>	UTP6A*
<b>Meter lengths:</b>	UTP6A**M

### Mini-Com® TX6A™ 10Gig™ UTP

### Jack Module with MaTriX Split Foil Technology

<b>Jack module:</b>	CJ6X88TG***
<b>Shuttered jack module:</b>	CJD6X88TG**
<b>Keyed jack module:</b>	CJK6X88TG***

### TX6A™ 10Gig™ UTP Copper Cable with MaTriX Technology

<b>Plenum:</b>	PUP6A04^~UG
<b>Riser:</b>	PUR6A04^~UG
<b>LSZH:</b>	PUL6A04‡~+G
<b>CM:</b>	PUC6A04‡~+G

### Mini-Com® Angled Flush Mount Modular Patch Panels

<b>24-port:</b>	CPPA24FMWBLY
<b>48-port:</b>	CPPA48FMWBLY

### Mini-Com® Flat Flush Mount Modular Patch Panels

<b>24-port:</b>	CPP24FMWBLY
<b>48-port:</b>	CPP48FMWBLY
<b>72-port:</b>	CPP72FMWBLY

For additional modular patch panels reference [www.panduit.com](http://www.panduit.com)

### Tools and Accessories

<b>Patch cord removal tool:</b>	PCRT1
<b>Flashlight kit:</b>	KPCRT1-FL
<b>Patch cord color band:</b>	PCBAND^^~Q

\*For lengths 3 to 20 feet (increments of one foot) 20, 25, 30, 35, or 40 feet change the length designation in part number to the desired length. For standard cable colors other than Off White, add suffix BL (Black), BU (Blue), GR (Green), RD (Red), YL (Yellow), OR (Orange), or VL (Violet) at the end of the part number. For example, the part number for a blue 15 foot patch cord is UTP6A15BU.

\*\*For lengths 1 to 10 meters (increments of one meter) 1.5, 2.5, 15, 20, 25, 30, 35, 40 meters, change the length designation in part number to the desired length. For standard cable colors other than Off White, add suffix BL (Black), BU (Blue), GR (Green), RD (Red), YL (Yellow), OR (Orange), or VL (Violet) after the M in the part number. For example, the part number for a blue 15 meter patch cord is UTP6A15MBU.

\*\*\*To designate color, add suffix IW (Off White), EI (Electric Ivory), WH (White), IG (International Gray), OR (Orange), RD (Red), BU (Blue), GR (Green), YL (Yellow), or VL (Violet).

^^~To designate color, add suffix BL (Black), BU (blue), RD (Red), YL (Yellow), GR (Green), or OR (Orange).

^To designate color, add suffix BU (Blue), WH (White), YL (Yellow), or IG (International Gray).

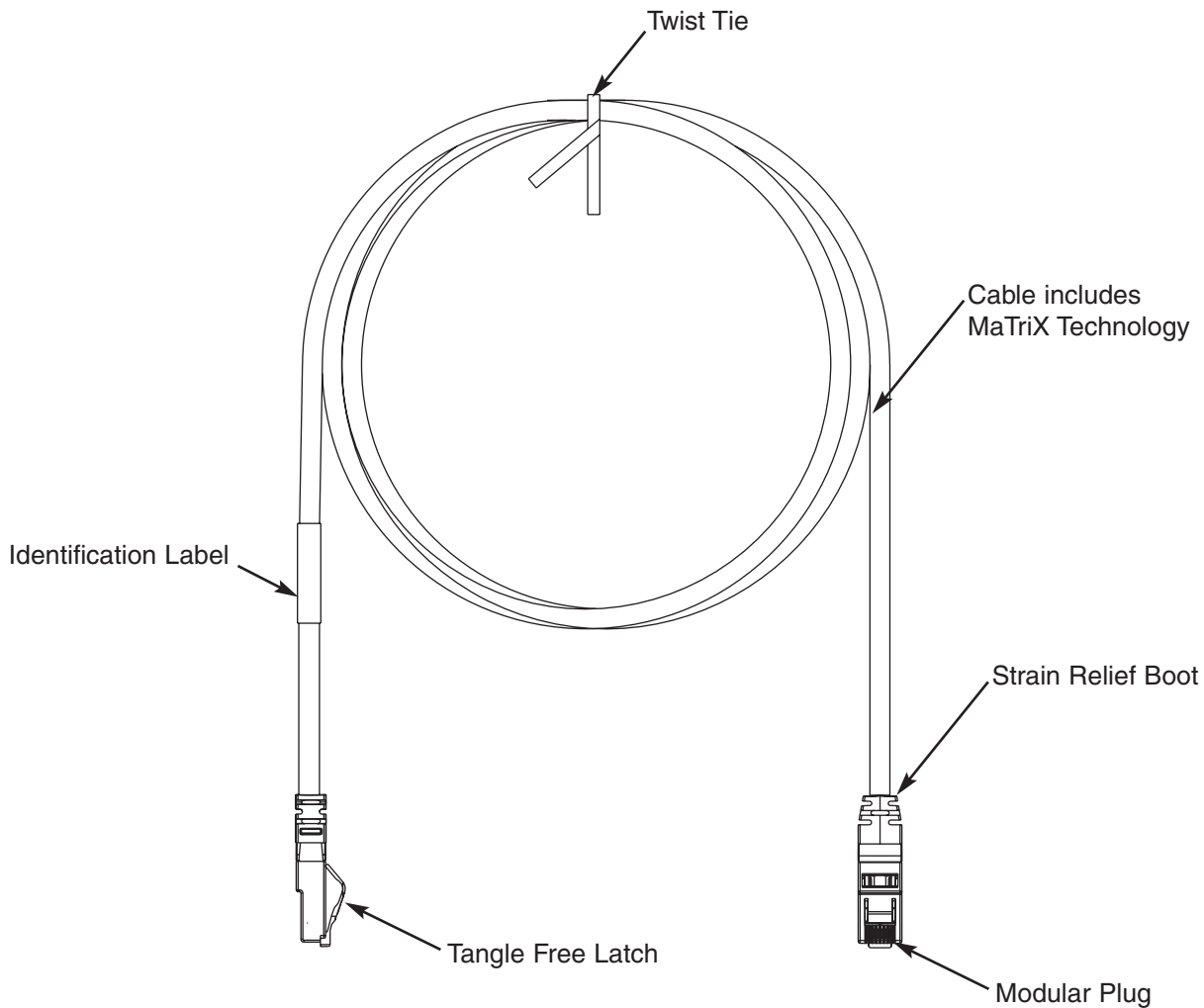
‡To designate color, add suffix BU (Blue) or WH (White). For additional cable colors, contact customer service.

+Add suffix E when ordering for countries in Europe, Middle East, or Africa.

^^~To designate color, add suffix WH (White), EI (Electric Ivory), IG (International Gray), BL (Black), BU (Blue), RD (Red), YL (Yellow), GR (Green), OR (Orange), or VL (Violet) before - Q in part number. 25/package.

Contact customer service for keyed patch cords, bulk packaged jack modules, and patch cords.

# TX6A™ 10Gig™ UTP Patch Cords with MaTriX Technology



**T568B Wiring Scheme**

Plug Position	Cable Wire
1	White/Orange
2	Orange
3	White/Green
4	Blue
5	White/Blue
6	Green
7	White/Brown
8	Brown

## WORLDWIDE SUBSIDIARIES AND SALES OFFICES

PANDUIT CANADA  
Markham, Ontario  
cs-cdn@panduit.com  
Phone: 800.777.3300

PANDUIT EUROPE LTD.  
London, UK  
cs-emea@panduit.com  
Phone: 44.20.8601.7200

PANDUIT SINGAPORE PTE. LTD.  
Republic of Singapore  
cs-ap@panduit.com  
Phone: 65.6305.7575

PANDUIT JAPAN  
Tokyo, Japan  
cs-japan@panduit.com  
Phone: 81.3.6863.6000

PANDUIT LATIN AMERICA  
Jalisco, Mexico  
cs-la@panduit.com  
Phone: 52.33.3777.6000

PANDUIT AUSTRALIA PTY. LTD.  
Victoria, Australia  
cs-aus@panduit.com  
Phone: 61.3.9794.9020

For a copy of Panduit product warranties, log on to [www.panduit.com/warranty](http://www.panduit.com/warranty)

For more information

Visit us at [www.panduit.com](http://www.panduit.com)

Contact Customer Service by email: [cs@panduit.com](mailto:cs@panduit.com)  
or by phone: 800-777-3300 and reference COSP142

**PANDUIT**®

©2009 Panduit Corp.  
ALL RIGHTS RESERVED.

WW-COSP142

9/2009