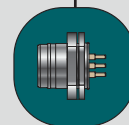




## Receptacles

- 4Pole Micro-Change® (M12) Receptacles
- Accepts both threaded and Ultra-Lock™ cordsets

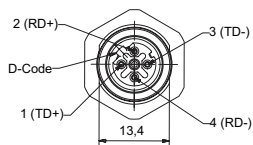
A variety of receptacles allow the data line to enter an enclosure and make a connection to the inside of the panel and its components. Front-panel mount, often used for sensor applications, and back-panel mount, typically used for enclosures, are available in both male and female configurations. All receptacles feature the patented Ultra-Lock feature, and can mate to both standard and Ultra-Lock M12 cordsets.



- Mates with both threaded M12 and Ultra-Lock™ M12 cordsets
- Category 5e compliant
- IP67 rated, perfect for harsh industrial environments
- D-Coded to ensure proper alignment/mating
- Board locking feature for more secure mounting

## Receptacles

FACE VIEW



FEMALE

PINOUT/  
COLOR CODE1- YELLOW (TD+)  
3- ORANGE (TD-)2- WHITE (RD+)  
4- BLUE (RD-)

		FIG	PCB-MOUNT	FIG	WITH 0.5M FLYING LEAD	FIG	CABLE TO RJ45
BACK-PANEL MOUNT/M16		1	ERWD2U70	5	ERWAAU7000C050	6	ERMFAU7003M006
		2	ERWF2U70 <sup>①</sup>				
BACK-PANEL MOUNT/M16 TO RJ45 ADAPTER	STRAIGHT					9	ER1FADAPTER
	90°					9	ER1FADAPTER90
FRONT-PANEL MOUNT/PG9		3	ERWD2J30	7	ERWAAJ3000C050		
FRONT-PANEL MOUNT/M16		4	ERWD2J30	8	ERWAAU3000C050		

① Includes board locking feature

## Specifications

### MECHANICAL

SHELL: NICKEL-PLATED BRASS  
 INSERT: PUR  
 CONDUCTORS: BRASS GOLD PLATED/BRONZE SELECTIVE GOLD PLATED  
 O-RING: FPM (ALSO CALLED VITON OR FKM)

### ELECTRICAL

VOLTAGE RATING: 215V  
 AMPERAGE RATING: 4A  
 TIA/EIA RATING: CATEGORY 5E

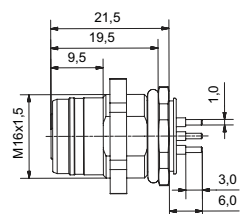
### ENVIRONMENTAL PROTECTION

IP67, SUN/OIL RESISTANT

### RECEPTACLE DIMENSIONS

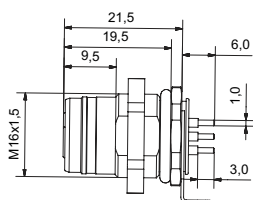
— BACK-PANEL MOUNT M16 —

FIG 1



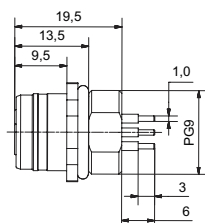
— BACK-PANEL MOUNT M16 —

FIG 2



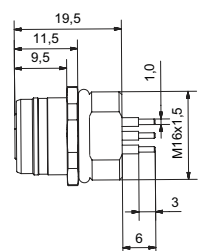
— FRONT-PANEL MOUNT PG 9 —

FIG 3



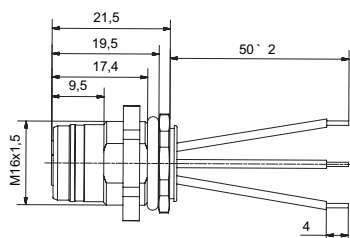
— FRONT-PANEL MOUNT M16 —

FIG 4



— BACK-PANEL MOUNT M16 WITH 50MM WIRE LEADS —

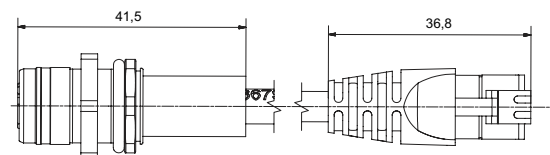
FIG 5



### RECEPTACLE DIMENSIONS

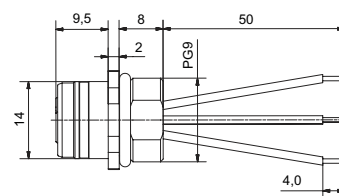
— BACK-PANEL MOUNT M16 WITH 0.6M CABLE —

FIG 6



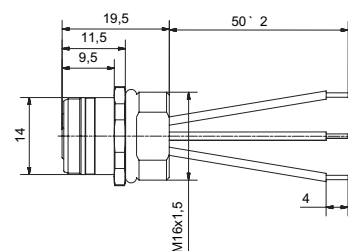
— FRONT-PANEL MOUNT PG 9 WITH 50MM WIRE LEADS —

FIG 7



— FRONT-PANEL MOUNT M16 WITH 50MM WIRE LEADS —

FIG 8



— BACK-PANEL MOUNT M16 TO RJ45 ADAPTER —

FIG 9

