

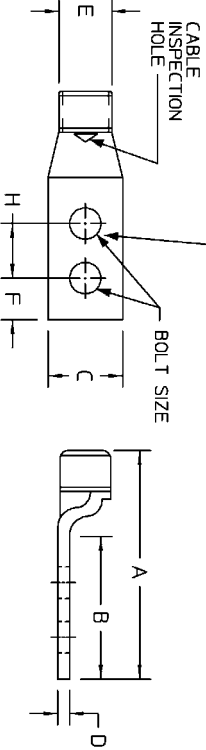
REVISIONS

29 SEE SHEET ONE FOR REVISIONS

ITEM NO.	WIRE SIZE	NAVY	FLEX (24 AWG)	CLASS G	CLASS H	CLASS I (24 AWG)	CLASS K (30 AWG)	CLASS M (24 AWG)	CLASS N (30 AWG)	CLASS G	CLASS A	CLASS B	CLASS C	CLASS D	CLASS E	CLASS F	CLASS H	DIE COIL	DIE CODE	TB#1	TB#2	INSTALLATION TOOLS				STRAPE LENGTH
																						TB#1	TB#2	TB#3	TB#4	
54255	1/0 AWG	100	1 (225/24)	1 (93 STR)	1 (93 STR)	1 (210 STR)	1 (836 STR)	1 (207 STR)	5/16	254	154	75	34	52	39	89				13475	11737	TB#D-3	5500		3/4"	
54270	1/0 AWG								3/8	283	193	83	19	57	39	100										
54280	2/0 AWG	125	1/0 (275/24)	1/0 (133 STR)	1/0 (239 STR)	1/0 (244 STR)	1/0 (904 STR)	1/0 (244 STR)	5/16	270	183	83	14	57	34	84					13472	11738	TB#D-4	5536		
54291	2/0 AWG								3/8	254	181	94	14	63	39	100										
54296	3/0 AWG	150	2/0 (325/24)	2/0 (133 STR)	2/0 (239 STR)	2/0 (242 STR)	2/0 (923 STR)	2/0 (325 STR)	1/2	334	228	175	24	63	50	175						11739	TB#D-5	5530		
54296	3/0 AWG								5/16	288	175	94	14	63	34	100										
54296	4/0 AWG	200	3/0 (450/24)	3/0 (133 STR)	3/0 (242 STR)	3/0 (448 STR)	3/0 (1644 STR)	3/0 (256 STR)	3/8	330	193	103	14	70	39	100						13475		5511		
54296	4/0 AWG								1/2	425	300	183	14	70	50	175										
54273	250 MCM	250																								
54275	250 MCM																									
54275	250 MCM																									
54285			4/0 (550/24)	4/0 (133 STR)	4/0 (239 STR)	4/0 (239 STR)	4/0 (933 STR)	4/0 (247 STR)	4/0 (1247 STR)	4/0 (532 STR)	4/0 (532 STR)	1/2	334	228	94	14	79	50	175			13472	13476	TB#D-5	5510	

LOW SMOKE

UL, CSA, T&B LOGO AND CABLE SIZE



MATERIAL: HIGH CONDUCTIVITY WROUGHT COPPER

FINISH: ELECTRO TIN PLATE UNLESS OTHERWISE SPECIFIED

SAFETY CAT. NO. WITH 'SP' FOR SILVER PLATED LUG

EXAMPLE: 54275SP SILVER PLATED LUG

SAFETY CAT. NO. WITH 'N' FOR NICKEL PLATE

EXAMPLE: 54275NP NICKEL PLATE LUG

NOTE: LUGS FINISHED WITH BOLT HOLE UNLESS OTHERWISE SPECIFIED

1- SEE DWG. NO. BS30248-1 FOR ADDITIONAL CAT. NOS.

2- SEE DWG. NO. AS38002 FOR CAT. NOS. OF INSTALLING DES. & TOOLS

SALES DWG. NO. BS30248

COPPER

3- SMART TOOL RANGE TAKING FEATURES

THE FOLLOWING SIZE COPPER COLOR-KEYED LUGS AND 2-WAY CONNECTORS, WHEN GRABBED WITH THE SMART TOOL, CAT. NOS. TB#8-750, TB#8-750A-1 PRODUCE THESE RANGE TAKING CAPABILITIES.

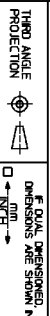
STANDARD CONNECTOR	RANGE TAKING
1/0 AWG	R6-1/0
2/0 AWG	R1-2/0
4/0 AWG	2/0-4/0
350 MCM	250-350
500 MCM	250-500
750 MCM	500-750

CONSULT FACTORY FOR SIZES NOT LISTED



PRODUCT MANAGER / DATE

Thomas & Betts Corporation
Memphis, Tennessee 38119



DESCRIPTION: T&B METHOD STANDARD TWO HOLE COPPER LUGS FOR CODE NAVY & FLEXIBLE COPPER CABLE

SIZE: B

REV. NO. 29

REV. DATE 12-4-06

SALES DWG. NO. BS30248

SHEET 2 OF 2



FOR CODE ONLY

Thomas & Betts

THE DRAWING IS INTENDED ONLY FOR DESCRIPTIVE PURPOSES AND SHOULD BE REFERRED TO DETAIL DRAWING SHEET (IF-CA) GENERATED DRAWING