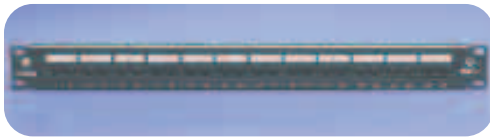


TrueNet®

Category 5e Patch Panels



24-port enhanced patch panel A/B



24-port enhanced patch panel, paper labels, A/B



48-port enhanced patch panel A/B



48-port enhanced patch panel, paper labels, A/B

ADC's TrueNet® Category 5e patch panels are an integral part of ADC's TrueNet system and provide Category 5e performance in a high-density design with concise station and port labeling. Available in 24 and 48 port variants, all TrueNet patch panels feature LSA-PLUS® silver-plated 45° angled contacts for the most reliable and robust connection available.

Features:

- UL 1863 listed and Category 5e performance verified
- Includes rear wire manager
- Wire can be terminated with either a KRONE® or 110 tool
- Forty-five degree silver-plated IDCs provide secure, reliable gas-tight connection
- Includes paper labels or silk-screened area for station identification
- Universal wiring label for easy termination of either T568A/B
- Designed for Gigabit Ethernet transmission
- Panels can be rack mounted in standard EIA 19-inch racks or wall mounted using optional 19-inch hinged wall-mount brackets

SPEC SHEET



www.adc.com • +1-952-938-8080 • 1-800-366-3891

Specifications

Environment for Use:	Indoors, in dry, closed room
Operating Temperature Range:	-40° to 70 °C (-40° to 158 °F)
Maximum Relative Humidity:	< 90% non-condensing
RJ Socket, 8 Positions, General Specification:	FCC Part 68.500, IEC 60603-7, EN 60603-7
Transmission Performance and Reliability:	> TIA/EIA 568-B.2 Category 5e > ISO 11801 Class D Standard > EN 50173 Category 5e
Number of Plug Insertion Cycles:	> 750
LSA-PLUS Insulation Displacement	
Wire Diameter Range for Solid and Stranded Copper Conductors:	22-26 AWG 0.40 mm to 0.65 mm (0.016" to 0.025")
Wire Insulation Diameter Range (PE,PVC):	0.70 mm to 1.70 mm (0.028" to 0.067")
RJ Interface Resistance:	< 20 mΩ
LSA-PLUS Contact Resistance:	< 1 mΩ
Contact Re-terminations KRONE Tool:	> 200
Insulation Resistance at 40 °C (104 °F) and 93% RH:	> 500 MΩ
Electrical Rating of Complete Assembly at 25 °C (77 °F) and 50% RH	
Ring Voltage Rating:	< 150V AC
Insulation Resistance:	> 100 MΩ at 500 VDC
Safety Rating:	UL 1863
Flammability Rating:	UL 94 V-0

Ordering Information

Description	Dimensions (HxWxD)	Catalog Number
24-port silk-screened patch panel, T568A/B compatible <i>Quantity: 1</i>	44.45 mm x 482.6 mm x 38.1 mm (1.75" x 19" x 1.5")	6653 1 585-24
48-port silk-screened patch panel, T568A/B compatible <i>Quantity: 1</i>	88.9 mm x 482.6 mm x 38.1 mm (3.5" x 19" x 1.5")	6653 1 585-48
24-port patch panel with snap-in port ID tabs and paper labels, T568A/B compatible <i>Quantity: 1</i>	44.45 mm x 482.6 mm x 38.1 mm (1.75" x 19" x 1.5")	6653 1 587-24
48-port patch panel with snap-in port ID tabs and paper labels, T568A/B compatible <i>Quantity: 1</i>	88.9 mm x 482.6 mm x 38.1 mm (3.5" x 19" x 1.5")	6653 1 587-48
6-port mini patch panel, Type 568A/B; mounts on UMS bracket, Type 105 rod mount or Type 105 back mount frame <i>Quantity: 1</i>	43.94 mm x 121.16 mm x 52.83 mm (1.73" x 4.77" x 2.08")	6653 1 607-00

KRONE® is a registered trademark of ADC Telecommunications, Inc.

SPEC SHEET



Web Site: www.adc.com

From North America, Call Toll Free: 1-800-366-3891 • Outside of North America: +1-952-938-8080
Fax: +1-952-917-3237 • For a listing of ADC's global sales office locations, please refer to our web site.

ADC Telecommunications, Inc., P.O. Box 1101, Minneapolis, Minnesota USA 55440-1101
Specifications published here are current as of the date of publication of this document. Because we are continuously improving our products, ADC reserves the right to change specifications without prior notice. At any time, you may verify product specifications by contacting our headquarters office in Minneapolis. ADC Telecommunications, Inc. views its patent portfolio as an important corporate asset and vigorously enforces its patents. Products or features contained herein may be covered by one or more U.S. or foreign patents. An Equal Opportunity Employer

1324689 6/05 Original © 2005 ADC Telecommunications, Inc. All Rights Reserved