

BEP Series Building Entrance Protectors

■ Outside Plant for
Business-Critical Continuity

Key Features

- Built-in splice chamber provides material and installation cost savings
- Lift-out protector panel facilitates installation; reduces inventory costs; is easy to repair
- Compact size requires minimum mounting space
- All units are stackable to accommodate future growth
- Gold-plated protector contacts minimize noise and customer complaints
- Rugged metal housing made of mill-galvanized steel for durability and low maintenance costs
- Designed to meet Telcordia TR-TSY-000299 and RDUP (formerly RUS) specifications for documented performance
- UL Listed with industry standard 5-pin protector modules (gas or solid-state); for documented performance
- 26AWG 18-in. fuse link for added protection
- Lock hasp provided for added security

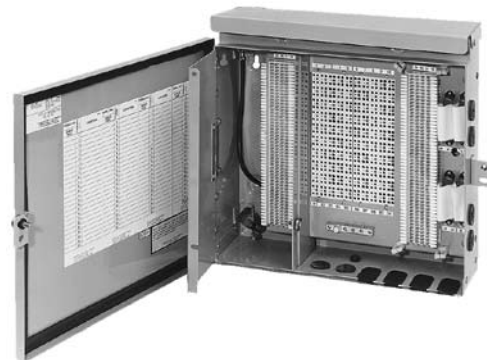
Description

The BEP series combine protection and distribution with a built-in splice chamber, for a single, compact, cost-effective unit designed for indoor building entrance applications. Central office pairs are connected with the following options: field splice, stub, 710 connectors, 3M® dry connectors, 66 quick-clip block, or 110-style block. The BEP series also offers a 26AWG fuse link for added protection. Subscriber wires are connected via the following options: 66 quick-clip, RJ21, 66 quick-clip and RJ21, 110-style block, or binding posts.

The BEP series is available in 25, 50, and 100-pair sizes. The 100-pair unit is stackable to 300-pair (stacking kit included in 100-pair). The protector modules can be included or purchased separately. The closure is accessed using a 216-type tool.

Application

The BEP series terminate, protect, and distribute central office cable pairs on the subscriber premises. They are ideal for use in multi-tenant dwelling and PABX installations.

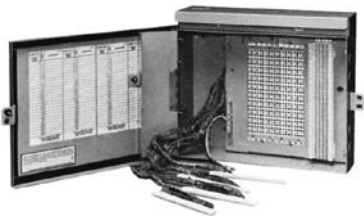


Quick-clip In/Quick-clip and RJ21 Out

BEP Series Building Entrance Protectors



**BEPC25C (25-pair)
Quick-clip In & Out**



**BEPC100MM (100-pair)
3M® Dry Connector In/Quick-clip Out**

Dimensions

Pair Count	H	— Housing Dimensions —	
		W	D
25/50/100	15.00-in. (38.10 cm)*	15.41-in. (39.14 cm)	4.7-in. (11.94 cm)

* 100-pair with binding posts has a 36-in. (91.44 cm) height.

NOTE: All dimensions are measured in inches, with metric conversions in parentheses.

Ordering Matrix

Housing	BEP = Building Entrance Protector
Output	C = 66 Quick-clip block
	G = RJ21 receptacle connector
	CG = 66 Quick-clip block & RJ21 receptacle connector
	B = Binding posts
	T = 110-style block
Pair Count	25 = 25-pair
	50 = 50-pair
	100 = 100-pair**
Input	FS = Field Splice, 18-in. tail
	CF = 710 connector, capless, receptacle, gel-filled, 18-in. tail, 26AWG fuselink
	MM = 3M 4000-D dry (MS2), 18-in. tail, 26AWG fuselink
	C = 66 Quick-clip block, 26AWG fuselink
	SC = 24AWG cable stub
	T = 110-style block, 26AWG fuselink
Cable Full Length (only if "sc" input)	6 = 6-ft.
	12 = 12-ft.
	25 = 25-ft.
	blank = Stubless

** 100-pair includes stacking kit

NOTE: To order with 5 protector modules installed, call customer service.

Accessories

Catalog Number	Part Number	Description
P35980	F535980	Grommets for 1-in. diameter hole (pkg. of 20)
P47839	F547839	U-shaped grommet
P47147	F547147	Cup-sems with push nut (pkg. of 10)

NOTE: For additional accessories, see the Accessories section of the catalog.

Emerson Network Power.

The global leader in enabling business-critical continuity.

- AC Power Systems
- Embedded Power
- Precision Cooling
- Connectivity
- Integrated Cabinet Solutions
- Services
- DC Power Systems
- **Outside Plant**
- Site Monitoring
- Embedded Computing
- Power Switching & Control
- Surge Protection

Emerson Network Power Energy Systems

4350 Weaver Parkway, Warrenville, IL 60555
Toll Free: 800-800-1280 (USA and Canada)
Telephone: 440-246-6999 Fax: 440-246-4876
EmersonNetworkPower.com/OSP

© 2006 Emerson Network Power Energy Systems, North America, Inc. All rights reserved.

The Emerson logo is a trademark and a service mark of Emerson Electric Co. Emerson Network Power is a division of Emerson Electric Co.

Printed in USA

