

## ADD-ON SOFTWARE

Your First Line of Defense, the enterprise-wide NetBotz Intelligent Monitoring solution protects your critical spaces and assets — from environmental and physical factors that jeopardize your business availability and continuity. NetBotz Add-On Software takes this protection even further. These applications extend the baseline capability of the NetBotz solution, giving you superb surveillance, image capture, motion detection, and monitoring of micro-environments and access to network services. All Add-Ons can invoke the early warning alerts that NetBotz is known for — via e-mail, SNMP traps, FTP, HTTP posting, or pager.

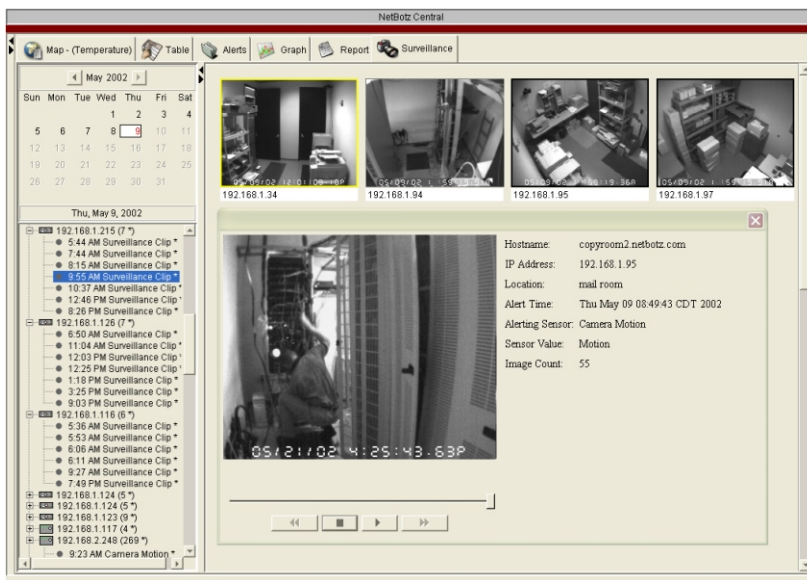
NetBotz has introduced powerful software applications that enhance the base monitoring capabilities of NetBotz appliances. **NetBotz Surveillance** enables IT managers to monitor who enters their IT facilities and track what they do while they're there. **NetBotz Camera Enhancements** heighten the image capture functions built into NetBotz appliances, and **Camera Motion Sensor** software adds motion detection capabilities without adding hardware. **NetBotz Branch Checker** software provides IT managers with an easy-to-use tool for monitoring access to critical network services from remote sites. **NetBotz Advanced Device Crawlers** monitors the internal physical condition and operational status of individual pieces of equipment.

### NETBOTZ SURVEILLANCE

NetBotz Surveillance enables IT managers to create a visual record of who enters IT areas and what they do while they're there. This server-based software acts as a central repository for pictures captured by the NetBotz monitoring appliances and provides users with options to quickly access surveillance events logged by date and time and play movie-like clips of those events. Clips can be saved as MPEG files for easy playback later. NetBotz Surveillance also displays live “thumbnail” images from NetBotz appliances and includes the appliance motion sensing necessary to generate surveillance events.

NetBotz Surveillance runs on the NetBotz Central server and is integrated into the NetBotz Central interface. For each NetBotz appliance configured for Surveillance, you can schedule when to capture surveillance events. NetBotz Surveillance is an excellent fit for remote server rooms and LAN closets, and other moderate traffic areas.

#### NETBOTZ SURVEILLANCE



*The right hand pane shows live thumbnail images from NetBotz monitoring appliances. A highlighted image border indicates whether a surveillance event has been reported within the last five minutes. To view a surveillance clip just double-click on it.*



## NETBOTZ ADVANCED DEVICE CRAWLERS

NetBotz Advanced Device Crawlers is the first monitoring technology to give IT professionals easy and secure cross-platform access to the physical micro environments — the internal vitals — within servers, switches, routers, UPS, and other network devices. These data, which include information such as CPU temperature, fan speed, and power supply status, are found in a vendor's extended SNMP Management Information Base (MIB). Advanced Device Crawlers uses patent-pending NetBotz technology to extract this physical data and then makes it available for monitoring and alerting. An efficient, reliable approach to monitoring, Advanced Device Crawlers can confine SNMP traffic to an organization's LANs. The NetBotz appliance hosting the Advanced Device Crawlers sends alerts about a device's internals via e-mail, HTTP, or FTP over TCP/IP using standard ports.



The screenshot shows the 'Device Crawlers' tab in the NetBotz interface. It displays a table with columns: Target, Status, System Vendor, System Model, System Type, System Uptime, Ping RTT, and Advanced Data. The table lists various devices including switches, routers, workstations, and UPS units, with their respective status (e.g., Pending, Alert, Avail) and ping response times.

| Target       | Status  | System Vendor             | System Model                 | System Type | System Uptime | Ping RTT | Advanced Data |
|--------------|---------|---------------------------|------------------------------|-------------|---------------|----------|---------------|
| 172.16.6.14  | Pending | --                        | --                           | --          | 0.00 seconds  | N/A      | NO            |
| 172.16.8.4   | Alert   | Extreme Networks          | Summit 48 Desktop Switch     | Switch      | 11 days...    | 0.010    | NO            |
| 172.16.3.2   | Avail   | Ascend Communications     | Max                          | Router      | 11 days...    | 0.010    | NO            |
| 172.16.7.1   | Avail   | Microsoft                 | Microsoft Windows NT 4.0     | Workstation | 20 hours...   | 0.007    | YES           |
| 172.16.5.4   | Avail   | Cabletron                 | TRMM                         | Unknown     | 11 days...    | 0.008    | NO            |
| 172.16.2.3   | Avail   | American Power Conversion | APC PowerNet SNMP Agent      | UPS         | 11 days...    | 3.888    | YES           |
| 172.16.7.7   | Avail   | Microsoft                 | Microsoft Windows NT 4.0     | Workstation | 11 days...    | 0.047    | YES           |
| 192.168.2.20 | Avail   | NetBotz                   | WallBotz 400                 | Appliance   | 1 hour...     | 0.008    | YES           |
| 172.16.9.3   | Avail   | FORE Systems              | ASX-1000 Backbone ATM Switch | Switch      | 11 days...    | 0.007    | NO            |
| 172.16.4.5   | Avail   | Bay Networks              | Bay Networks BridgeHub       | Bridge      | 11 days...    | 0.023    | NO            |
| 172.16.2.5   | Avail   | American Power Conversion | APC PowerNet SNMP Agent      | UPS         | 11 days...    | 0.010    | YES           |
| 172.16.7.3   | Avail   | Microsoft                 | Microsoft Windows NT 4.0     | Workstation | 11 days...    | 0.007    | YES           |

### ADVANCED DEVICE CRAWLERS

Advanced Device Crawlers is available for use on all NetBotz monitoring appliances and can monitor up to 48 network devices. Physical data from vendor MIB extensions is available for servers from Dell, Compaq, IBM, and Sun; routers and switches from Cisco, Extreme, Foundry, Juniper, Avaya, Alcatel; and UPS from APC, Powerware, and Liebert. More vendors will be supported in the future.

NetBotz also offers Basic Device Crawlers, a subset of Advanced Device Crawlers which is included on all 400 Series appliances. NetBotz Basic Device Crawlers provides MIB-II based status information on up to 48 individual devices within the monitored cabinet or room. Alerts are generated if the monitored devices fail to respond or if the network interface status changes.

## NETBOTZ BRANCH CHECKER

NetBotz Branch Checker software, an add-on application that runs on NetBotz 310 and 400 Series monitoring appliances, provides IT managers with an easy-to-use tool for continual monitoring to ensure that critical resources such as DNS, Mail, and Web servers are accessible by remote sites. Alerts are generated if connectivity to a network service is lost or if time to complete the round trip goes above a specified threshold.

NetBotz Branch Checker can support:

- 5 SMTP mail servers
- 3 DNS servers
- 3 Web servers
- 5 generic services (for example, TELNET, FTP, print servers, or file servers)

For SMTP, DNS, and Web (HTTP) servers, Branch Checker establishes a connection and measures the round-trip time (make connection, receive acknowledgment) at the application protocol level. For generic servers, Branch Checker does the same thing at the TCP protocol level.

Branch Checker data is viewed by clicking a tab on the main page of the BotzWare™ Advanced View interface. It can also be accessed from NetBotz Central.



## CAMERA ENHANCEMENTS FOR 310

NetBotz Camera Enhancements software is shipped standard with Model 400 appliances and is an optional add-on for the WallBotz 310. This software module lets NetBotz 310 and 400 Series appliances capture camera images at a rate of up to 5 per second, a significant jump from the standard rate of 1 image every 3 to 4 seconds.

The Camera Enhancements software also enables more pictures to be retained for an alert — up to 80 for 400s and up to 60 pictures per alert for the WallBotz 310. And, the user can specify a certain number of pictures to be captured before the alert. For example, if total pictures are set to 60 and 15 are specified before the alert, then the alert record (in the e-mail and NetBotz Central Alerts View) would show 15 pictures before the event and 45 after, enabling the user to better diagnose the cause of the alert. The user also can specify a delay from the time of the event until the first picture is taken.

NetBotz monitoring appliances deliver pictures for alerts and posting in JPEG format. With the Camera Enhancements software, images can optionally be delivered in BMP format, eliminating the need to compress the image capture data before sending it and thereby enabling images to be delivered more quickly by appliances connected to faster networks.

## CAMERA MOTION SENSOR FOR 300/303/310

The Camera Motion Sensor software add-on enables NetBotz Model 300, 303, and 310 appliances to use their built-in camera to detect motion and generate alerts. The Camera Motion Sensor is standard on 400 model appliances. The combination of user-specified motion sensitivity and duration-of-motion settings determine the level of motion that will trigger an alert. Additionally, a “motion sensitivity mask” feature allows you to exclude an area of the image from the Camera Motion Sensor. For example, this feature can prevent a flickering computer screen or movement visible through a window from triggering a motion alert.

Like other NetBotz alerts, Camera Motion Sensor alerts trigger e-mails and SNMP traps, and appear in NetBotz Central Alerts View. They can also be delivered via HTTP posting or FTP. A “motion outline” feature can be enabled which results in a visible dotted-line outline of areas within the image where motion was detected. On a sequence of images, the outline “moves” on each picture as the area of motion changes.



BotzWare, NetBotz, RackBotz, WallBotz, and the NetBotz symbol are registered trademarks of NetBotz, Inc. All other company and product names mentioned are used only for identification purposes and may be trademarks or registered trademarks of their respective companies.

© 2003 NetBotz Corporation. All rights reserved.

10/28/2003

1.877.908.BOTZ(2689) 11044 RESEARCH BLVD., BLDG. C100 AUSTIN, TX 78759