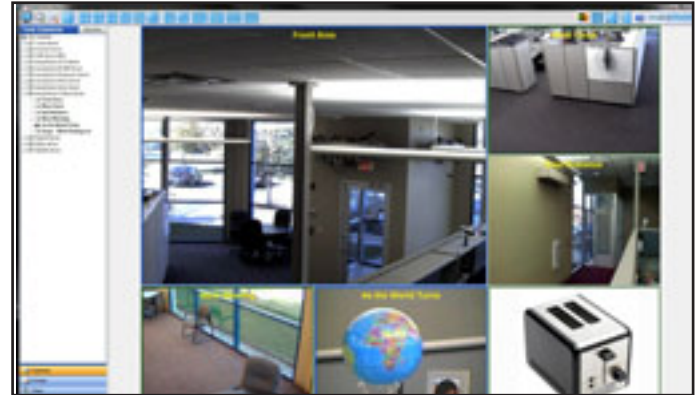




Cross Platform IP Video Surveillance Software & Servers

"Toaster" IP Camera Server Up to 24 IP Cameras per Server

The "Toaster" IP Camera server provides complete video management utilizing today's latest IP video surveillance cameras in a compact chassis with removeable hard drives. The system comes pre-configured with the exacqVision VMS Server and client software. The powerful, yet easy-to-operate client user interface installs on any standard computer running Windows, Linux or Mac OS X and connects to multiple exacqVision servers creating a virtually unlimited amount of cameras and protection. Each unit IP Server can be easily expanded from 1 to up to 24 IP cameras.



Features & Overview

Stand-alone and Scalable as part of an exacqVision Enterprise Deployment

- Each server expandable from 1 to 24 IP cameras.
- Simple and cost-effective to add additional IP camera licenses.
- Common client simultaneously connects to unlimited exacqVision servers to create scalable network.

Powerful Integration

- Integration with leading IP cameras, video analytic edge devices and access control systems.

Intuitive exacqVision Software

- Requires little to no training.
- Multi-monitor client display. Drag and drop cameras between monitors.
- Graphical search display for all cameras and recorded audio.
- Multi-camera playback and support.
- Digital PTZ functionality on all cameras in live and recorded mode.
- Powerful video and audio export features.

Compact & Cost Efficient NVR Solution

- Incorporates Intel Atom D510 processor

Mobile Access

- Access video with web browsers and mobile devices with internet access.

Cross Platform

- Server software runs on embedded Linux.
- Client software freely available for Windows, Linux and Macintosh.

IP Camera Integration



Video Analytics



Access Control Integration



The latest Network Integration Partner list (including cameras supported via Onvif spec) is available at www.exacq.com/support/ipcameras.html

Technical Specifications

exacqVision EL Series - "The Toaster" IP Camera Server

- VGA Output
- Dual Gbit NIC
- Four Rear USB 2.0 Ports
- Two SATA II Ports
- Preloaded exacqVision VMS Software
- External Universal Power Supply



Model #	IP Licenses	HD Capacity
IPS-0500-ELT	Up to 24	500 GB
IPS-1000-ELT	Up to 24	1 TB
IPS-2000-ELT	Up to 24	2 TB
IPS-4000-ELT	Up to 24	4 TB

SERVER SPECIFICATIONS

CPU:	Intel Atom D525 1.8 GHz Processor
IP CAMERA INPUTS:	From 1 to 24
RECORDING RESOLUTION:	Up to 5 megapixel (camera dependent)
FRAME RATE:	Camera dependent
COMPRESSION:	H.264, MPEG-4, MJPEG (camera dependent)
NIC:	Dual 1Gbit 1000Base T RJ-45
RAM:	1GB
USB2 PORTS:	5 (1 front, 4 rear)
eSATA PORTS:	2 (rear)
HARD DRIVE STORAGE:	Enterprise Class--up to 4 TB, Front-loading removeable
VGA OUTPUT:	1 VGA outputs
OPERATING SYSTEM:	Linux Embedded
COMPATIBLE CLIENT OS:	Windows, Linux, Mac OS X
WARRANTY:	3 years, parts and labor
DIMENSIONS:	6(H) x 4(W) x 8.5(D) inches 15.4(H) x 10.16(W) x 21.59(D) cm
WEIGHT:	7.5 lbs. / 3.41 kg
OPERATING TEMPERATURE:	0-40 degrees Celsius
RELATIVE HUMIDITY:	0-95%
AC INPUT VOLTAGE:	10/240 V
POWER FREQUENCY:	50Hz-60Hz
POWER ADAPTER:	External 60W
POWER CONSUMPTION:	25W

CLIENT WORKSTATION - MIN. REQ.

(Full remote operation from most computers)

OS:	Windows, Linux, Mac OS
PROCESSOR:	2 Ghz Celeron (min.)
MEMORY:	512 MB RAM
VGA:	Standard high performance

